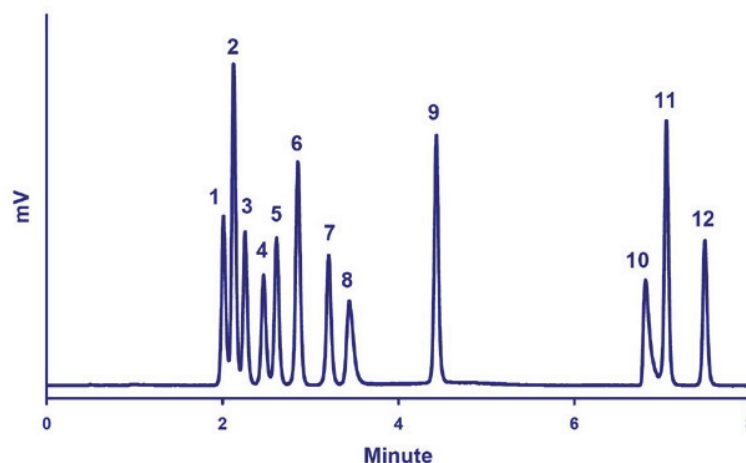


Underivatized Amino Acids: Essential and Semi-Essential



Chromatogram of the Direct HILIC/LT-ELSD Analysis of Essential and Semi-Essential Amino Acids.

Standard mixture: 1-PHE, 2-TRY, 3-LEU, 4-ILE, 5-MET, 6-TYR, 7-VAL, 8-CYS, 9-THR, 10-HIS, 11-ARG, 12-LYS (250ppm each)

Injection volume: 2 μ L

Column: Synchronis HILIC (1,7 μ m, 2,1 x 100mm), 30°C

Flowrate: 0.5mL/min

Eluent: A: Ammonium formate 100mM, pH3 - B: ACN

Gradient: 0-1 minute: 16%A, 1-2.5 minutes from 16%A to 25%A, 2.5-3.5 minutes: 25%A, 3.5-4 minutes: from 25%A to 30%A, 4-8 minutes: 30%A

Detector: SEDEX 90LT, 40°C, 3.5Bar