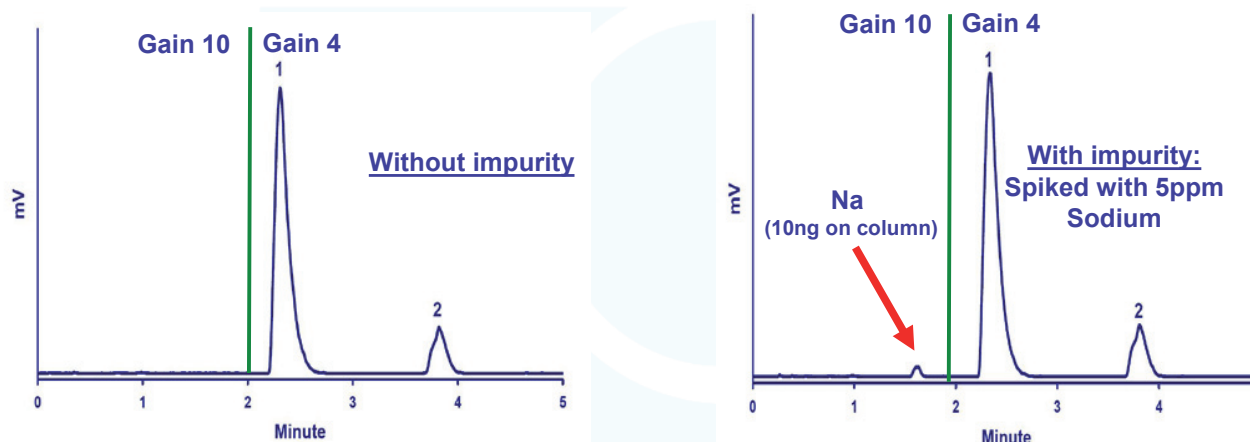


Simultaneous HPLC/LT-ELSD Analysis of Imipramine, its Counterion and an Impurity



Chromatograms of the Simultaneous HPLC/LT-ELSD Analysis of Imipramine and its Counterion, with and without an Impurity (Sodium, 5ppm)

Standard mixture: 1- Imipramine (API: 10 000ppm), 2- Cl (Counterion)
Injection volume: 2 μ L (20 μ g API)
Column: Acclaim Trinity P1 (3 μ m, 2.1 x 150mm), 35°C
Flowrate: 0.5mL/min
Eluent: Ammonium acetate 50mM, pH:5 / ACN (60:40)
Detector: SEDEX 90LT, 40°C, at 0 minute: Gain 10, at 2 minutes: Gain 4, 3.5bar