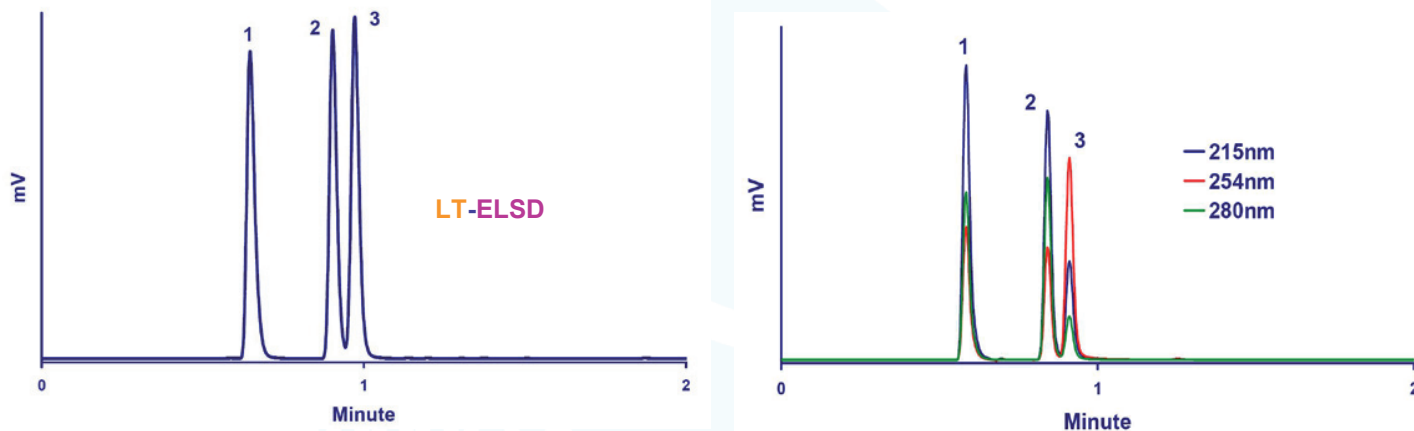


Response Consistency: Fast HPLC/LT-ELSD/DAD Analysis of Non-Volatile Compounds with Different Chemical Structures and same Concentration



Chromatograms of the HPLC/LT-ELSD/DAD Analysis of 5-Fluorocytosine, Theophylline and Acetaminophen

Standard Mixture: 1- 5-Fluorocytosine, 2- Theophylline and 3- Acetaminophen (500ppm each)

Injection volume: 2 μ L

Column: Halo C18 (2.7 μ m, 2.1 x 150mm), 30°C

Flowrate: 0.5mL/min

Eluent: H₂O / ACN (85:15)

Detector: SEDEX 90LT, 50°C, 3.5bar