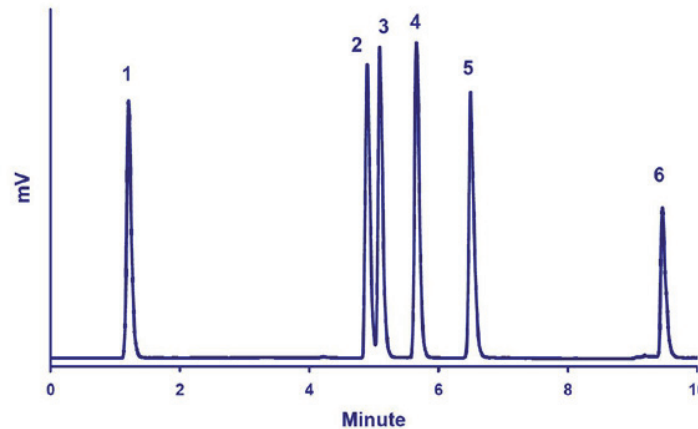


Analytical Monitoring of Biodiesel Production



Chromatogram of the Normal-Phase HPLC/LT-ELSD Analysis of Tripalmitin Hydrolysis Products.

Standard mixture: 1-Tripalmitin, 2-1,3 Dipalmitin, 3 -1,2 Dipalmitin, 4-Palmitic acid, 5-Monopalmitin, 6-Glycerol (250ppm for 1, 2, 3, 4, 5, and 1000ppm for semi-volatile glycerol)

Injection volume: 2 μ L

Column: Synchronis Amino (1,7 μ m, 2,1 x 100mm), 30°C

Flowrate: 0.5mL/min

Eluent: A: Hexane - B: Acetone + 0.2% formic acid

Gradient: 0-1 minute 100%A, 1-6 minutes: from 100%A to 50%A, 6-8 minutes: from 50%A to 0%A

Detector: SEDEX 90LT, 28°C, 3.5Bars