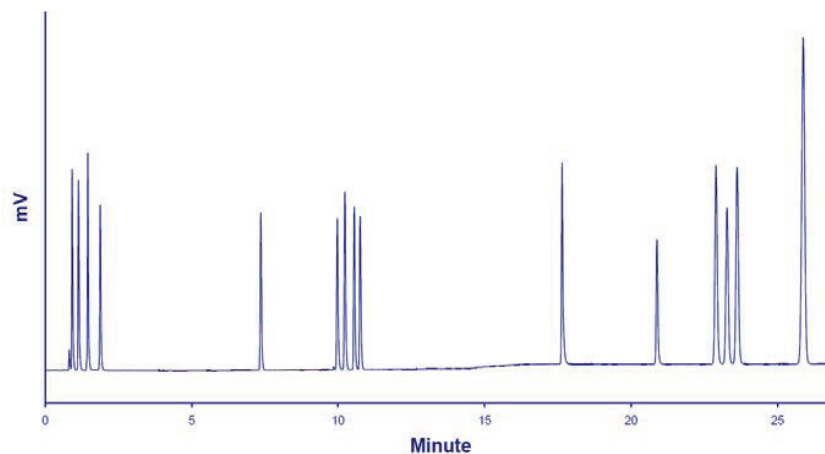


Generic HPLC/LT-ELSD Method for Vitamins



Chromatogram of the Simultaneous HPLC/LT-ELSD Analysis of Water- and Fat-Soluble Vitamins.

Standard mixture: 15 Compounds (see Table next slide)

Injection volume: 2 μ L

Column: Intakt Scherzo SM-C18 (3 μ m, 2 x 150mm), 30°C

Flowrate: 0.3mL/min

Eluent: A: H₂O + 0,3% HCOOH - B: ACN

Gradient: 0-0.1 minute: 100%A, 0.1-10 minutes: from 0%B to 30%B, 10-11 minutes: 30%B, 11-12 minutes: from 30%B to 100%B, 12-26 minutes: 100%B

Detector: SEDEX 90LT, 40°C, 3.5Bar

SEDEX LT-ELSD: S90 Applications



Generic HPLC/LT-ELSD Method for Vitamins



	RT	%RSD (n=6)		LOD (S/N=3)
	Minutes	RT	Response	ng (o.c.)
1 - B1	0.92	0.11	2.6	5.7
2 - B8	1.14	0.09	6.2	6.3
3 - B6	1.44	0.16	2.7	1.8
4 - C	1.94	0.25	2.4	9.6
5 - B5	7.32	0.15	6.8	6.9
6 - B9	9.92	0.09	3.1	8.0
7 - B12	10.17	0.11	4.1	4.6
8 - B2	10.49	0.11	3.4	5.0
9 - B7	10.70	0.09	4.2	4.8
10 - A	17.64	0.06	6.7	1.7
11 - K2	20.87	0.07	2.1	14.2
12 - D2	22.89	0.06	1.5	47.6
13 - D3	23.26	0.06	2.6	52.6
14 - E	23.61	0.07	1.6	45.0
15 - K1	25.86	0.07	1.7	41.7



SENSITIVITY
FLEXIBILITY
EXPERIENCE

Distributor:



ERC GmbH
Otto-Hahn-Strasse 28-30
85521 Riemerling GERMANY
☎ +49 89 66055696
☎ +49 89 60824826
partner@erc-hplc.de
www.erc-hplc.de