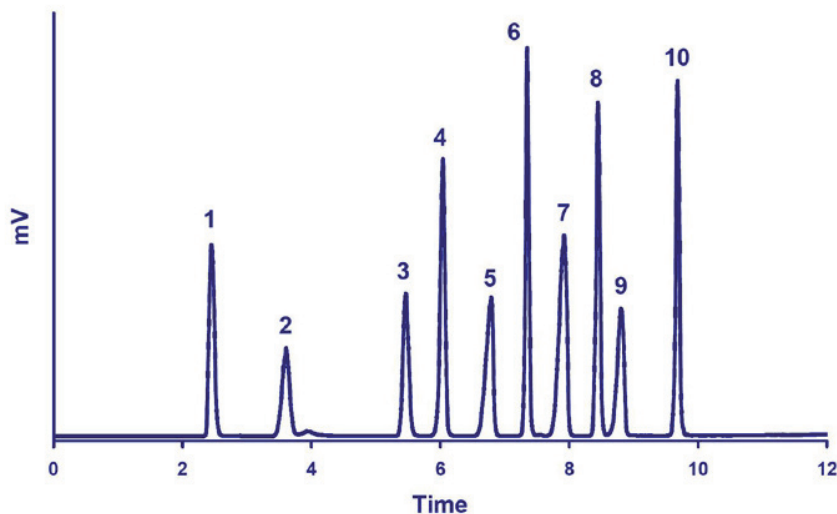


Fast HPLC/LT-ELSD Method for Natural and Artificial Sweeteners



Chromatogram of the Simultaneous HILIC/LT-ELSD Analysis of Natural and Artificial Sweeteners including Polyols.

Standard mixture: 1-Erythritol, 2-Sucralose, 3-Sorbitol, 4-Neotame, 5-Acesulfame, 6-Neohesperidin dihydrochalcone, 7-Saccharin, 8-Aspartame, 9-Cyclamate, 10-Rebaudioside A (from *Stevia*) (500ppm each)

Injection volume: 2 μ L

Column: Hypersil GOLD HILIC (1.9 μ m, 2.1 x 150mm), 40°C

Flowrate: 0.5mL/min

Eluent: A: Ammonium acetate 50mM, pH5 - B: ACN

Gradient: 0-0.5 minute: 5%A, 0.5-10 minutes: from 5%A to 30%A

Detector: SEDEX 90LT, 35°C, 3.5Bar