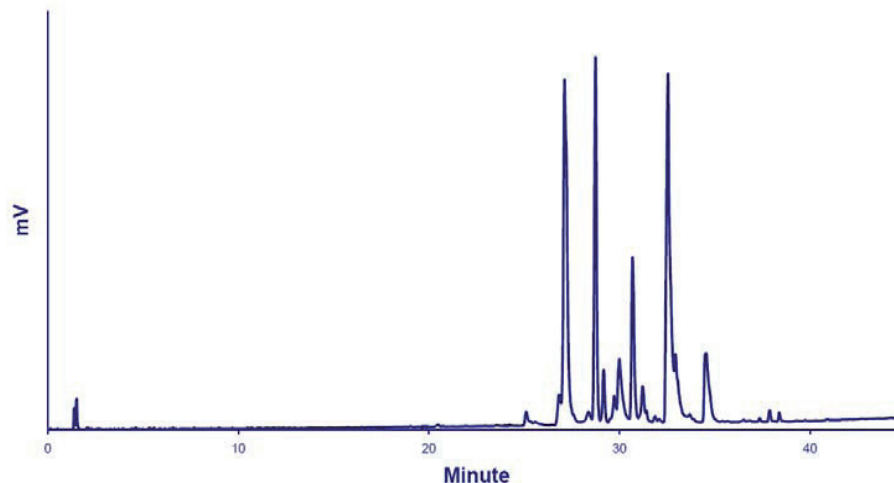


Generic HPLC/LT-ELSD Method for Lipids



Chromatogram of the HPLC/LT-ELSD Analysis of Phospholipids.

Standard mixture: Phosphatidylcholine, Phosphatidylethanolamine, Phosphatidylinositol, Phosphatidylserine and Sphingomyelin

Injection volume: 2 μ L

Column: Hypersil GOLD (1,9 μ m, 2,1 x 200mm), 60°C

Flowrate: 0.3mL/min

Eluent: A: MeOH/ACN/H₂O/Formic acid (500:300:198:2) - B: MeOH/Acetone/Formic acid (598:400:2)

Gradient: 0-3 minutes: 100%A, 3-43 minutes: from 100%A to 100%B

Detector: SEDEX 90LT, 40°C, 3.5Bars