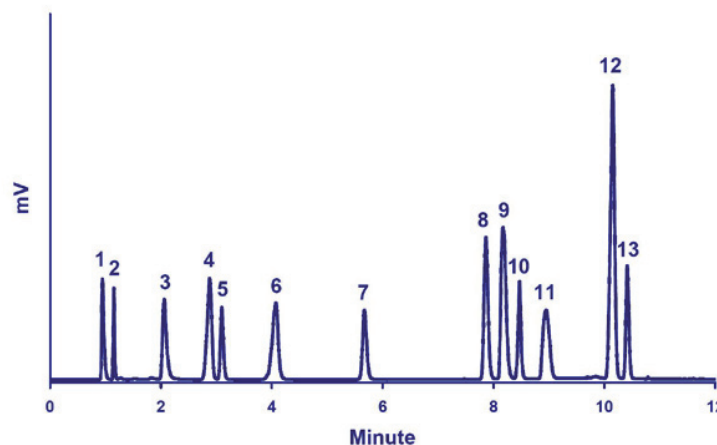


## Vitamins, Minerals, Sweeteners, Amino acids, Salts, Caffeine: Global Method for Food Additives and Food Supplements



Chromatogram of the Simultaneous HILIC/LT-ELSD Analysis of Several Food Additives and Supplements.

**Standard mixture:** 1-Caffeine, 2-Vitamin B3, 3-Vitamin B6, 4-Chloride, 5-Erythritol, 6-Vitamin C, 7-Xylitol, 8-Potassium, 9-Sodium, 10-Rebaudioside A (from *Stevia*), 11-Taurine, 12-Magnesium, 13-Glutamic acid, (500ppm to 1000ppm each)

**Injection volume:** 1 $\mu$ L

**Column:** Ascentis Express HILIC (2.7 $\mu$ m, 2.1 x 150mm), 30°C

**Flowrate:** 0.5mL/min

**Eluent:** A: Ammonium formate 200mM, pH:3 - B: ACN

**Gradient:** 0-1 minute: 8%A, 1-8 minutes: from 8%A to 25%A, 8-12 minutes: 25%A

**Detector:** SEDEX 90LT, 40°C, 3.5Bar