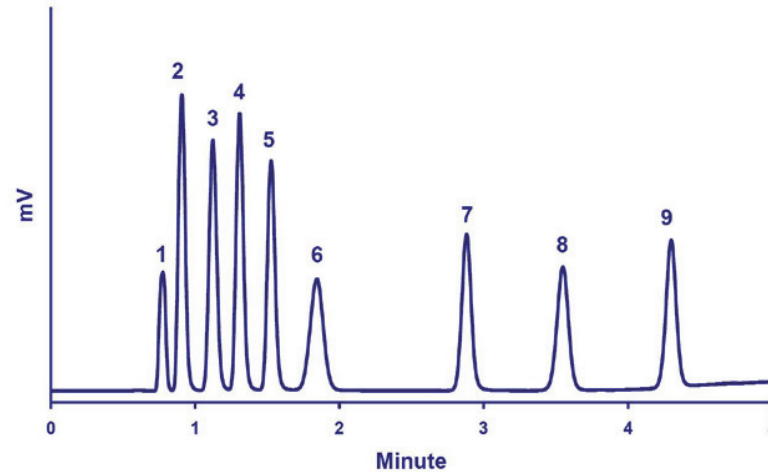


Fast HPLC/LT-ELSD Method for Carbohydrates



Chromatogram of the Fast and Simultaneous HPLC/LT-ELSD Analysis of Polyols, Mono- and Disaccharides.

Standard mixture: 1-Glycerol, 2-Rhamnose, 3-Arabinose, 4-Fructose, 5-Sorbitol, 6-Glucose, 7-Inositol, 8-Saccharose, 9-Maltose (500ppm each)

Injection volume: 2 μ L

Column: Imtakt UK-Amino (3 μ m, 2.0 x 150mm), 60°C

Flowrate: 0.8mL/min

Eluent: A: H₂O - B: ACN

Gradient: 0-2 minutes: 10%A, 2-3 minutes: from 10%A to 20%A, 3-5 minutes: 20%A

Detector: SEDEX 90LT, 30°C, 3.5Bar