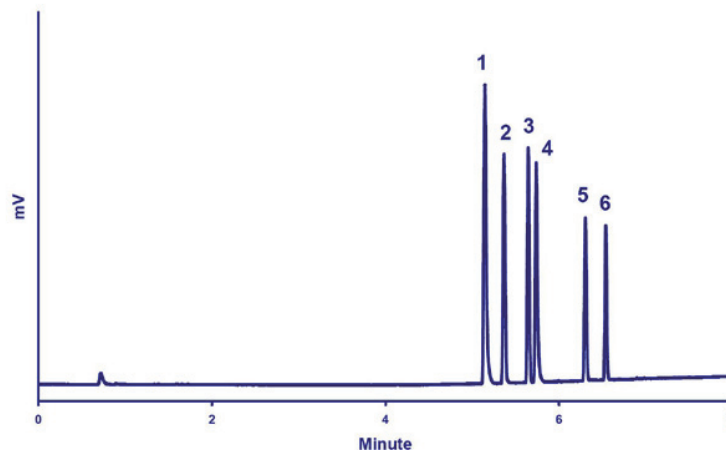


## Aroma Chemical Compounds



### Chromatogram of the Simultaneous HPLC/LT-ELSD Analysis of Several Aroma Chemical Compounds.

**Standard mixture:** 1-Vanillic acid, 2-p-Hydroxybenzaldehyde, 3-Vanillin, 4-Syringaldehyde, 5-Ethylvanillin, 6-Coumarin

**Injection volume:** 1 $\mu$ L

**Column:** Halo C18 (2.7 $\mu$ m, 2.1 x 150mm), 25°C

**Flowrate:** 0.4mL/min

**Eluent:** A: H<sub>2</sub>O + 0.2% formic acid - B: ACN + 0.2% formic acid

**Gradient:** 0-1 minute: 5%B, 1-7 minutes: from 5%B to 90%B

**Detector:** SEDEX 90LT, 28°C, 3.5Bar