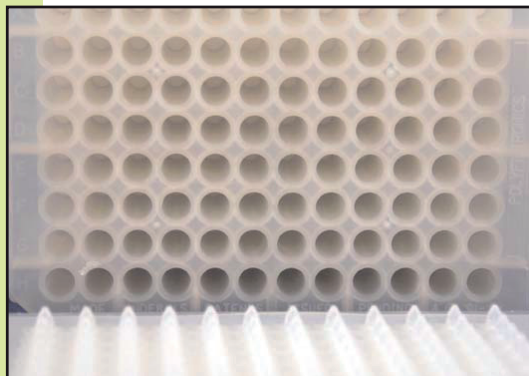
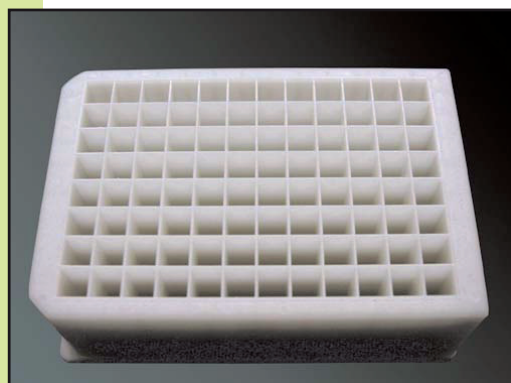


## Spe-ed™ 96



96 well round plate



96 well square plate

### SPE (Solid Phase Extraction) in a 96 Well format. Run 96 Samples at a Time.

Make your solid phase extraction (SPE) sample preparation easier, faster, and more economical with *Spe-ed 96* Microtiter Plates from Applied Separations.

**Economical** - Prepare 96 samples at one time. Reduce use of hazardous solvents, operator time, glassware and equipment.

**Reproducible** - Achieve high recoveries with 2-3% coefficients of variation.

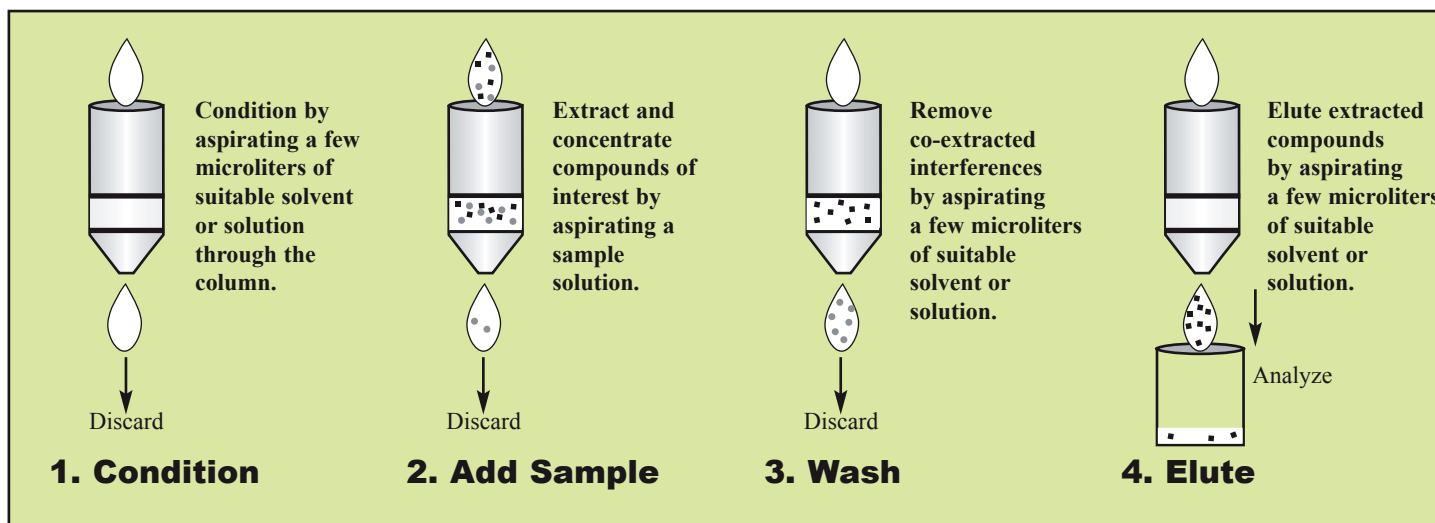
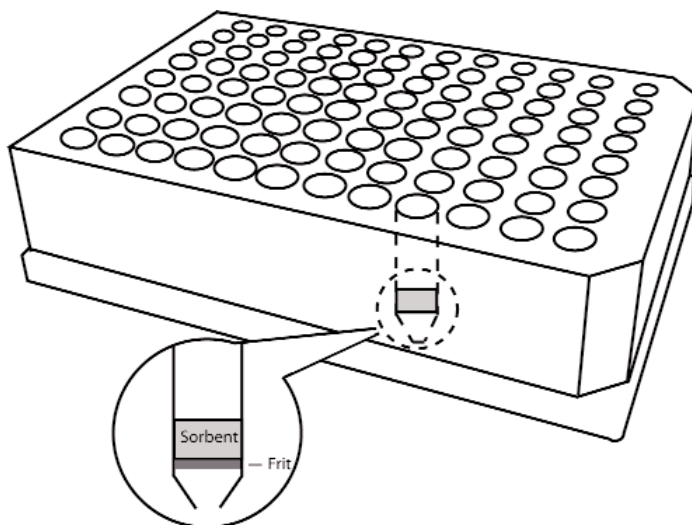
**Versatile** - Perform extractions with a wide variety of sorbents.

Applied Separations offers 1mL and 2mL plates as well as frits, collection plates, and mat caps.



1mL and 2mL 96 well plates.

# Spe-ed 96 for Parallel SPE Sample Processing



Applied Separations offers collection plates that fit perfectly with the 96 well plates for easy sample collection.



Bottom view of collection plate.

**Distributor:**

# Spe-ed 96 Product Selection

Sorbents	1mL		2mL			
	25mg	50mg	25mg	50mg	100mg	200mg
C18 Octadecyl/14	24050	24051	24052	24053	24054	24055
C18 Octadecyl/18	24060	24061	24062	24063	24064	24065
C18 Octadecyl/22	24070	24071	24072	24073	24074	24075
C18 Octadecyl/OH	24080	24081	24082	24083	24084	24085
C8 Octyl	24100	24101	24102	24103	24104	24105
PH Phenyl	24110	24111	24112	24113	24114	24115
CH Cyclohexyl	24120	24121	24122	24123	24124	24125
C4 Butyl	24130	24131	24132	24133	24134	24135
C2 Ethyl	24140	24141	24142	24143	24144	24145
C1 Methyl	24150	24151	24152	24153	24154	24155
CNe Cyanopropyl	24160	24161	24162	24163	24164	24165
CN Cyanopropyl (not endcapped)	24170	24171	24172	24173	24174	24175
SI Silica Gel	24180	24181	24182	24183	24184	24185
FLO Florisil	24190	24191	24192	24193	24194	24195
ALN Alumina (Neutral)	24200	24201	24202	24203	24204	24205
ALA Alumina (Acidic)	24210	24211	24212	24213	24214	24215
ALB Alumina (Basic)	24220	24221	24222	24223	24224	24225
DIO Diol	24230	24231	24232	24233	24234	24235
COOH Carboxylic Acid	24240	24241	24242	24243	24244	24245
SCX Benzenesulfonic Acid	24250	24251	24252	24253	24254	24255
NH2 Aminopropyl	24260	24261	24262	24263	24264	24265
PSA Pri/Sec Amine	24270	24271	24272	24273	24274	24275
DEA Diethylamino	24280	24281	24282	24283	24284	24285
N+ Quaternary Amino	24290	24291	24292	24293	24294	24295

## Resins & Specialty Sorbents

RP 101	24300	24301	24302	24303	24304	24305
RP 102	24310	24311	24312	24313	24314	24315
RP 103	24320	24321	24322	24323	24324	24325
RP 104	24330	24331	24332	24333	24334	24335
Spe-ed Advanta	24340	24341	24342	24343	24344	24345
ABN	24350	24351	24352	24353	24354	24355
ABN II	24360	24361	24362	24363	24364	24365
THC II	24370	24371	24372	24373	24374	24375
Amide-2	24380	24381	24382	24383	24384	24385

C18 Membrane	1mL Plate	24090
--------------	-----------	-------

2mL Plate	24091
-----------	-------

Please inquire for additional information on packing materials or custom packing.

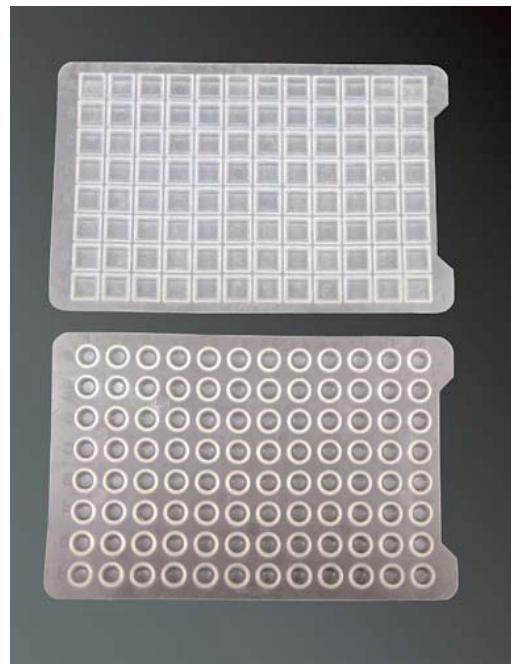
Distributor:



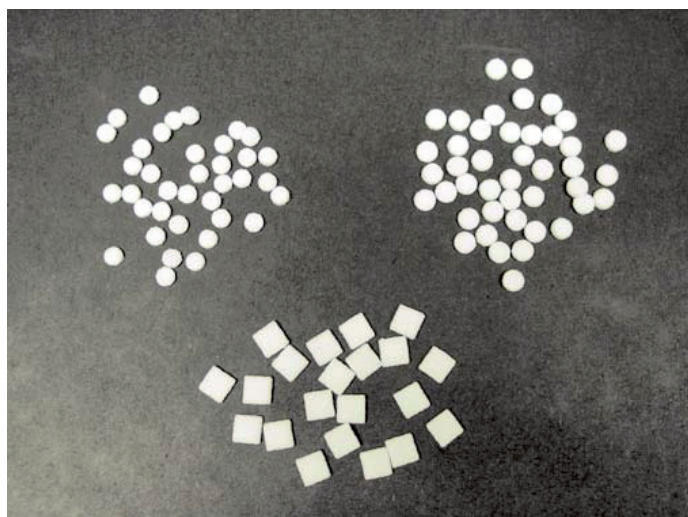
# Spe-ed™ 96 Accessories



96 Well Plate Top Mat.



Both square and round top mats are available for the 96 well plates.



Frits to accommodate the 96 well plates.

Cat. #	Description	Qty.
24030	1mL empty extraction plate	1
24031	1mL extraction plate w/20µ frits	1
24032	1mL 20µ frits	100
24033	1mL collection plates	20
24034	1mL collection plate	1
24029	Universal 96-well vacuum manifold	1
24035	1mL Cap Mat	1

Cat. #	Description	Qty.
24040	2mL empty extraction plate	1
24041	2mL extraction plate w/20µ frits	1
24042	2mL round 20µ frits	100
24043	2mL square 20µ frits	100
24044	2mL collection plates	20
24045	2mL collection plate	1
24047	2mL Cap Mat	1

spe19  
10/06

**Distributor:**