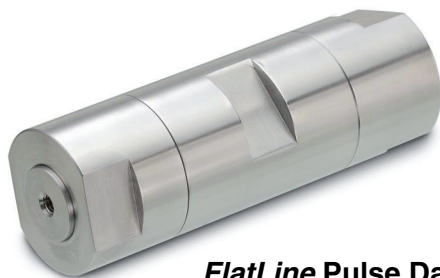
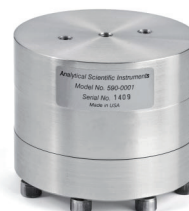


PrimeLine™ HPLC and UHPLC Accessories

FlatLine™ Pulse Dampers



FlatLine Pulse Damper



FlatLine HC Pulse Damper

FlatLine™ Pulse Dampers Feature:

- ❑ Rupture proof, no diaphragm
- ❑ Flow path geometry combines clean flush out with minimal internal volume
- ❑ Custom sizes available for OEM
- ❑ *Flatline* HC (High Capacity) increases damping efficiency and range
- ❑ Can be manufactured to include a pressure transducer and/or a prime purge valve

The *ASI FlatLine* Pulse Damper combines performance and reliability in a simple, easy to use housing. Standard 10-32 inlet and outlet ports allow quick connection into virtually any HPLC system. Solid core technology provides reliable long term operation without the down time associated with ruptured or leaking membrane dampers. Custom sizes and additional features like integral prime/purge valve available for the OEM market.

Although similar to the standard *FlatLine* Damper, the HC (High Capacity) features a bimodal damping mechanism which includes solid core and dynamic spring deflection. This combination increases damping efficiency over a wider pressure range. The HC is particularly well suited for damping at low pressures, below 500 PSI.

Description	ASI Part Number
FlatLine Pulse Damper	590-0001
FlatLine HC Pulse Damper	590-0010

Distributor:

ERC GmbH · Otto-Hahn-Strasse 28-30 · D-85521 Riemerling
☎ +49(0)89/660 55 696 · Fax: +49(0)89/608 24 826 · partner@erc-hplc.de · www.erc-hplc.de

Pulse Damper Comparison

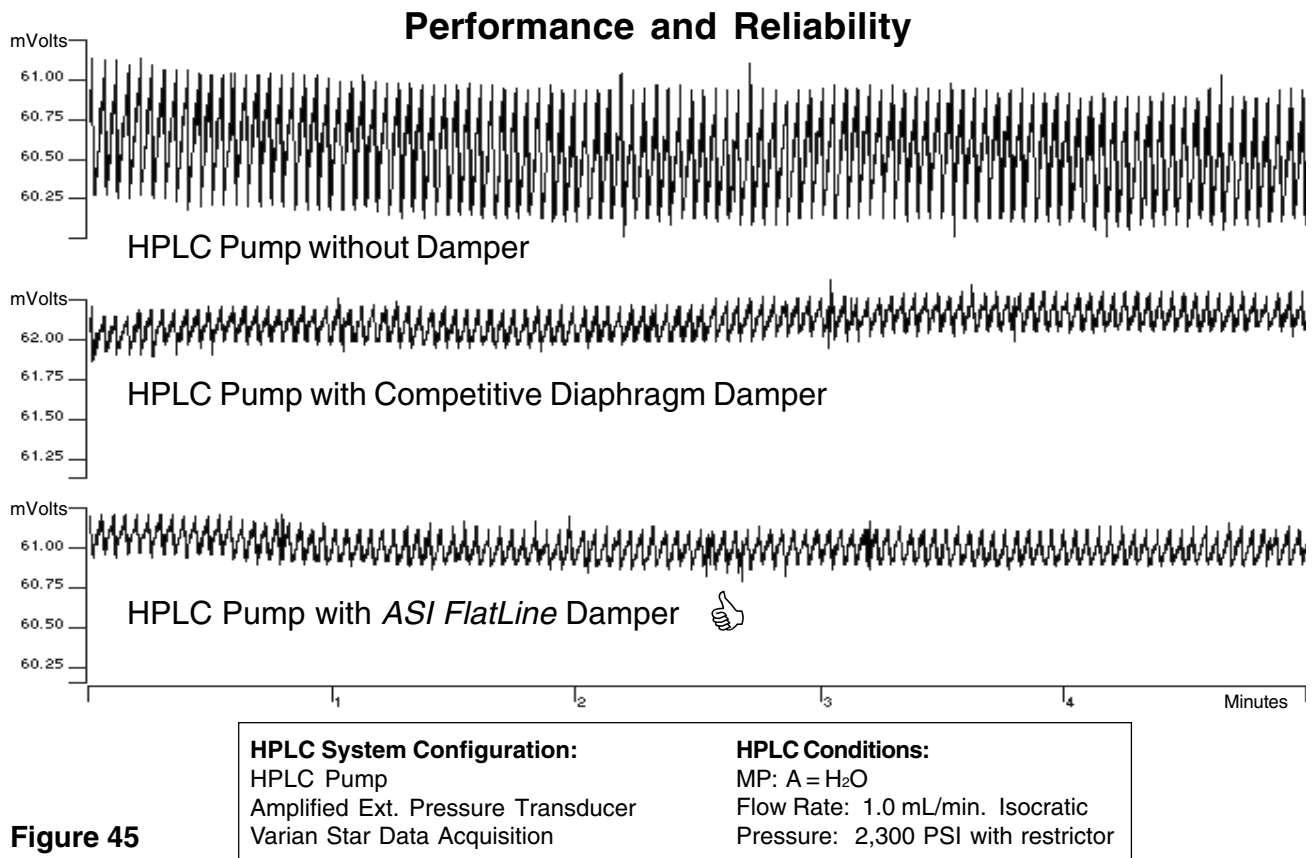


Figure 45

Solid Core Design Improves Flush Out and Dispersion

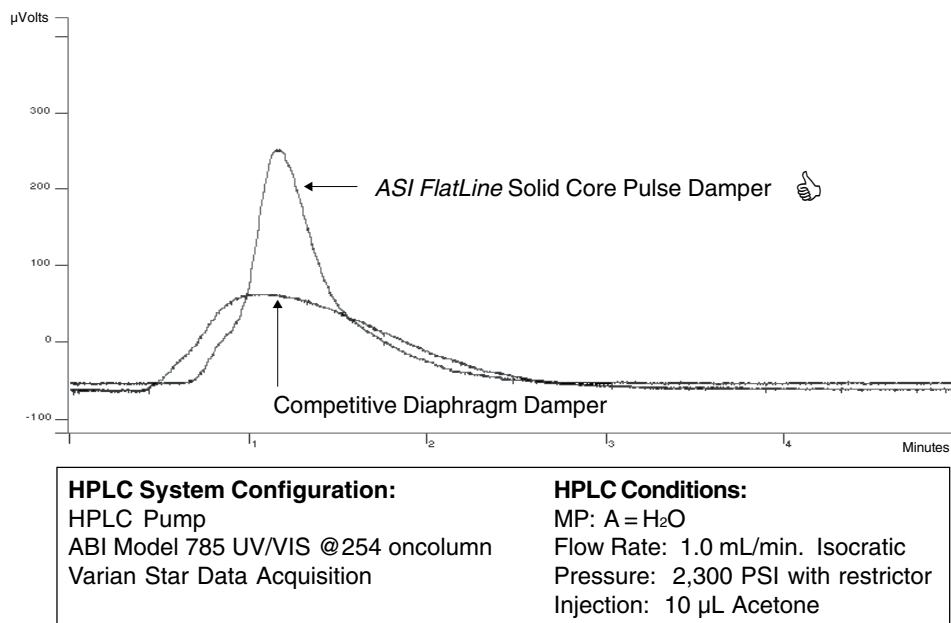


Figure 46

Distributor: