

# Post Column Reactor



1

## Post Column Reactor Features:

- Rupture proof reactor cartridge designed for long term reliability
- Interchangeable reactor cartridges for optimizing reaction volume
- Convenient access to all PCR components
- Digital temperature controller is easy to set and read
- Modular PCR system provides maximum flexibility for system configuration
- Optional Static Mixers optimize reagent mixing with minimal dispersion

*Distributor:*

ERC GmbH · Otto-Hahn-Strasse 28-30 · D-85521 Riemerling  
☎ +49(0)89/660 55 696 · Fax: +49(0)89/608 24 826 · partner@erc-hplc.de · www.erc-hplc.de

# Post Column Reactor

## Introduction

The Model 310 Post Column Reactor (PCR) Module can be used to increase detection sensitivity for variety of compounds including amino acids, proteins, carbohydrates, inorganic ions, and pesticides. The PCR consists of a temperature controller and a reactor cartridge which is designed to combine efficient mixing with low reaction volumes. This combination provides improved reaction kinetics with less peak dispersion resulting in maximum detection sensitivity.

## Features

### ➤ Rupture Proof Reactor Cartridge Design

Unlike conventional TFE tube reactors, the Model 310 PCR reactor will not rupture at high temperatures and pressures. Rated to 3,000 PSI at 150 °C.

### ➤ Interchangeable Cartridge Reactor

Available in 0.15 mL, 0.5 mL and 1.0 mL cartridge volumes to allow for maximum flexibility for all post column applications.

### ➤ Convenient Access

Pull-out oven compartment allows easy access to reactor cartridges.

### ➤ Digital Temperature Control

Provides stability to 0.5 °C and thermal safety cutoff.

## Specifications

Cartridge Volumes:	0.15 mL, 0.5 mL and 1.0 mL
Maximum Pressure:	3,000 PSI @ 150 °C
Temperature Control:	Solid state controller with LED display
Oven Temperature Range:	10 °C above ambient to 150 °C
Module Dimensions:	12" W x 9" D x 6" H
Wetted Materials:	Teflon®, 316 SS and PEEK
Power Requirements:	120 VAC/220 VAC, 50-60 Hz Also available 100 VAC

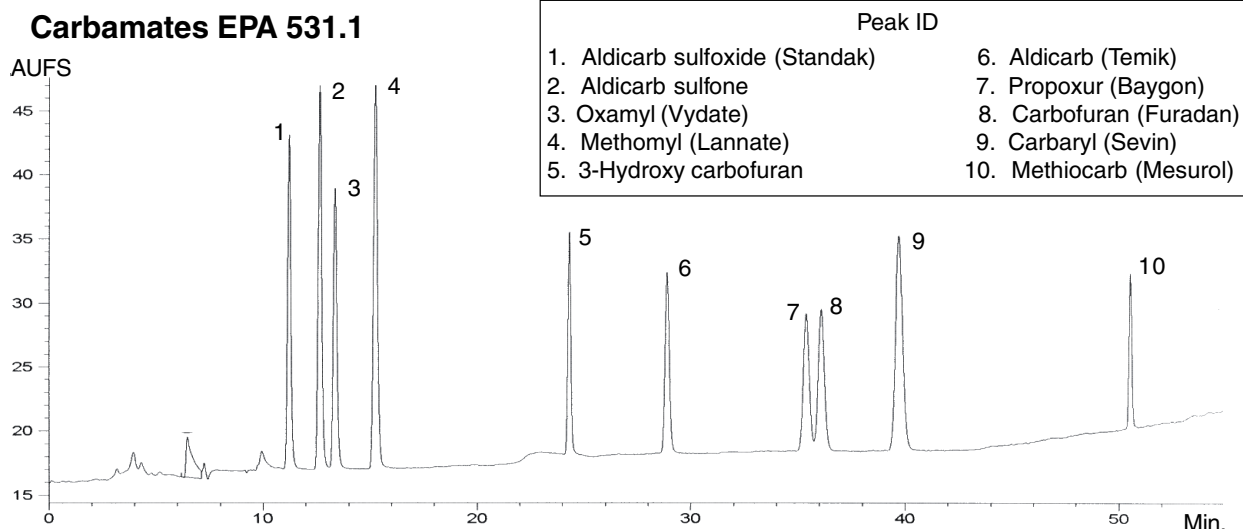


Figure 4

Courtesy Mulan Labs

Distributor:

## Model 310 Post Column Reactor Heater Modules

Description	ASI Part Number
PCR Heater Module, 120 VAC	310-0120
PCR Heater Module, 220 VAC	310-0220
PCR Heater Module with 0.15 mL Cartridge, 120 VAC	310-0151
PCR Heater Module with 0.15 mL Cartridge, 120 VAC <b>Biocompatible</b>	310-0151B
PCR Heater Module with 0.15 mL Cartridge, 220 VAC	310-0152
PCR Heater Module with 0.15 mL Cartridge, 220 VAC <b>Biocompatible</b>	310-0152B
PCR Heater Module with 0.5 mL Cartridge, 120 VAC	310-0501
PCR Heater Module with 0.5 mL Cartridge, 120 VAC <b>Biocompatible</b>	310-0501B
PCR Heater Module with 0.5 mL Cartridge, 220 VAC	310-0502
PCR Heater Module with 0.5 mL Cartridge, 220 VAC <b>Biocompatible</b>	310-0502B
PCR Heater Module with 1.0 mL Cartridge, 120 VAC	310-1001
PCR Heater Module with 1.0 mL Cartridge, 120 VAC <b>Biocompatible</b>	310-1001B
PCR Heater Module with 1.0 mL Cartridge, 220 VAC	310-1002
PCR Heater Module with 1.0 mL Cartridge, 220 VAC <b>Biocompatible</b>	310-1002B

## Reactor Cartridges

Description	ASI Part Number
Reactor Cartridge, 0.15 mL	310-0150
Reactor Cartridge, 0.15 mL <b>Biocompatible</b>	310-0150B
Reactor Cartridge, 0.5 mL	310-0500
Reactor Cartridge, 0.5 mL <b>Biocompatible</b>	310-0500B
Reactor Cartridge, 1.0 mL	310-1000
Reactor Cartridge, 1.0 mL <b>Biocompatible</b>	310-1000B

Distributor: