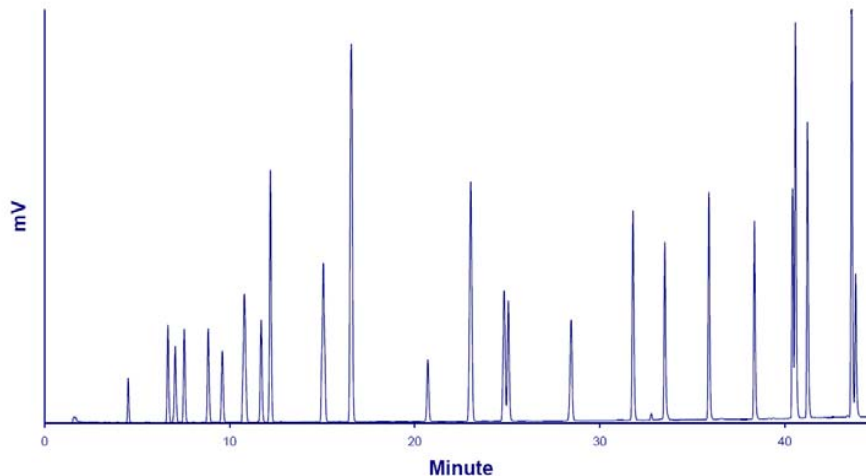


Generic HPLC/LT-ELSD Method for Lipids



Chromatogram of the Simultaneous HPLC/LT-ELSD Analysis of Fatty Acids, Fatty Alcohols, Fat-Soluble Vitamins, Mono-, Di- and TriGlycerides and Related Compounds.

Standard mixture: 25 Compounds (see Table next slide)

Injection volume: 2 μ L

Column: Hypersil GOLD (1,9 μ m, 2,1 x 200mm), 60°C

Flowrate: 0.3mL/min

Eluent: A: MeOH/ACN/H₂O/Formic acid (500:300:198:2) - B: MeOH/Acetone/Formic acid (598:400:2)

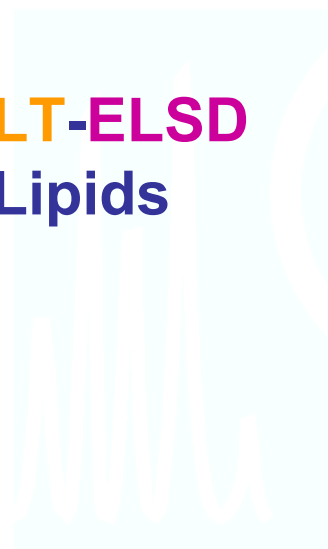
Gradient: 0-3 minutes: 100%A, 3-43 minutes: from 100%A to 100%B

Detector: SEDEX 90LT, 28°C, 3.5Bars

SEDEX LT-ELSD: S90 Applications



Generic HPLC/LT-ELSD Method for Lipids



| | RT | %RSD (n=6) | | LOD (S/N=3) |
|---------------------------|---------|------------|----------|----------------|
| | Minutes | RT | Response | ng (o.c.) |
| 1 - Lauric acid | 4.87 | 0.22 | 4.7 | 16.2* |
| 2 - Linolenic acid | 7.17 | 0.21 | 3.3 | 4.1 |
| 3 - Myristic acid | 7.58 | 0.21 | 2.1 | 1.6 |
| 4 - Retinol (Vit A) | 8.10 | 0.20 | 3.3 | 3.6 |
| 5 - Linoleic acid | 9.43 | 0.20 | 2.1 | 5.1 |
| 6 - Monolein | 10.21 | 0.14 | 3.3 | 4.8 |
| 7 - Palmitic acid | 11.43 | 0.25 | 2.9 | 0.8 |
| 8 - Oleic acid | 12.35 | 0.23 | 2.0 | 5.7 |
| 9 - Hexadecanol | 12.88 | 0.12 | 4.6 | 2.1 |
| 10 - Stearic acid | 15.77 | 0.16 | 2.2 | 0.5 |
| 11 - Octadecanol | 17.32 | 0.11 | 2.6 | 0.5 |
| 12 - Eicosanol | 21.63 | 0.06 | 3.1 | 0.7 |
| 13 - Cholesterol | 23.80 | 0.17 | 2.8 | 1.3 |
| 14 - Docosanol | 25.57 | 0.06 | 3.2 | 0.9 |
| 15 - a-Tocopherol (Vit E) | 25.80 | 0.05 | 2.9 | 3.8 |
| 16 - Vitamin K | 29.20 | 0.02 | 3.6 | 3.8 |
| 17 - Squalene | 32.54 | 0.12 | 2.0 | 2.4 |
| 18 - Diolein | 34.13 | 0.05 | 2.8 | 2.3 |
| 19 - Trilaurin | 36.50 | 0.10 | 3.1 | 2.1 |
| 20 - Trilinolenin | 38.90 | 0.08 | 4.0 | 2.5 |
| 21 - Trimyristin | 40.97 | 0.08 | 4.7 | 1.7 |
| 22 - Coenzyme Q10 | 41.09 | 0.03 | 2.7 | 1.8 |
| 23 - Trilinolein | 41.73 | 0.06 | 3.6 | 1.9 |
| 24 - Tripalmitin | 44.09 | 0.06 | 3.9 | 1.7 |
| 25 - Triolein | 44.29 | 0.06 | 4.5 | 1.1 |

* Semi-volatile compound

Distributor:



ERC GmbH
Otto-Hahn-Strasse 28-30
D-85521 Riemerling
☎ +49 89 660 55 696
☎ +49 89 608 24 826
partner@erc-hplc.de
www.erc-hplc.de