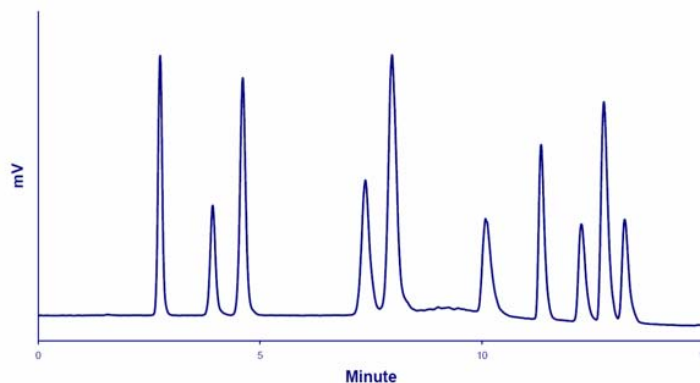


## Generic HPLC/LT-ELSD Method for Inorganic Ions



### Chromatogram of the Simultaneous HPLC/LT-ELSD Analysis of Inorganic Anions and Cations.

**Standard mixture:** 10 Compounds (see Table next slide)

**Injection volume:** 2 $\mu$ L

**Column:** ZIC-HILIC (3.5 $\mu$ m, 2.1 x 150mm), 40°C

**Flowrate:** 0.3mL/min

**Eluent:** A: Ammonium formate 20mM, pH:3 - B: ACN

**Gradient:** 0-3 minutes: 20%A, 3-10 minutes: from 20%A to 80%A, 10-15 minutes: 80%A

**Detector:** SEDEX 90LT, 40°C, 3.5Bar

## Generic HPLC/LT-ELSD Method for Inorganic Ions

	RT	%RSD (n=10)		LOD (S/N=3)
	Minutes	RT	Response	ng (o.c.)
1 - NO <sub>3</sub>	2.76	0.1	2.2	5.8
2 - Br	3.93	0.07	3.1	6.7
3 - Cl	4.60	0.09	4.0	8.1
4 - K	7.21	0.13	1.9	9.5
5 - Na	7.80	0.12	1.7	3.5
6 - PO <sub>4</sub>	10.05	0.06	3.1	15.4
7 - SO <sub>4</sub>	11.22	0.04	2.8	10.3
8 - Zn	12.05	0.07	2.9	6.7
9 - Mg	12.59	0.09	3.2	<b>0.6</b>
10 - Ca	13.06	0.17	2.5	1.3