

# USE NQAD IN TANDEM WITH UV TO OBTAIN A COMPLETE PROFILE OF SAMPLE COMPONENTS

Application note # QAN-0078

## PARAMETERS

### NQAD

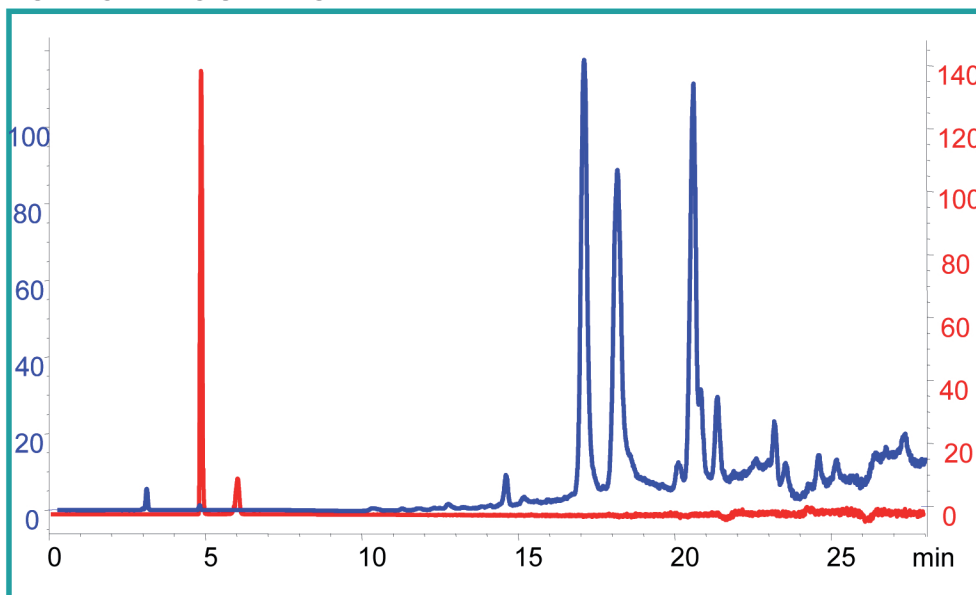
GAS: Air  
FILTER: 1.3 sec  
GAIN: 1X  
EVAPORATION TEMP: OFF

### HPLC

MOBILE PHASE A: Water  
MOBILE PHASE B: ACN  
METHOD: 0-95% B in 40 minutes

FLOW RATE: 1.0 mL/min  
COLUMN: Alltima amino 100A, 250 x 4.6 mm, 5u  
COLUMN TEMP: Ambient  
INJECTION VOLUME : 10 µL  
ANALYTE: Bigalow<sup>®</sup> blueberry caffeine free tea  
CONCENTRATION: 5 g tea steeped for 5 minutes in 100C water (20 mL)

## CHROMATOGRAMS



— Tea mixture  
— 1 mg/mL caffeine



ERC GmbH  
Otto-Hahn-Strasse 28-30  
D-85521 Riemerling  
☎ +49(0)89/660 55 696  
Fax: +49(0)89/608 24 826  
partner@erc-hplc.de  
www.erc-hplc.de