

USE NQAD IN TANDEM WITH UV TO OBTAIN A COMPLETE PROFILE OF SAMPLE COMPONENTS

Application note # QAN-0076

PARAMETERS

NQAD

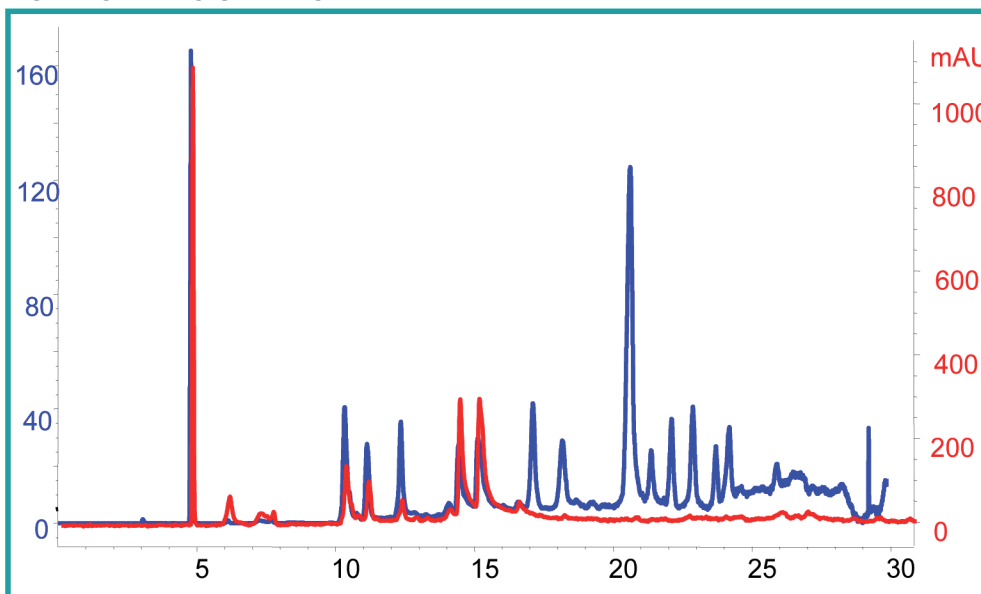
GAS: Air
 FILTER: 1.3 sec
 GAIN: 1X
 EVAPORATION TEMP: OFF

HPLC

MOBILE PHASE A: Water
 MOBILE PHASE B: ACN
 METHOD: 0-95% B in 40 minutes

FLOW RATE: 1.0 mL/min
 COLUMN: Alltima amino 100A, 250 x 4.6 mm, 5u
 COLUMN TEMP: Ambient
 INJECTION VOLUME : 10 µL
 ANALYTE: Salada® green tea
 CONCENTRATION: 5 g tea steeped for 5 minutes in 100C water (20 mL)

CHROMATOGRAMS



— NQAD
 — UV, 280



ERC GmbH
 Otto-Hahn-Strasse 28-30
 D-85521 Riemerling
 ☎ +49(0)89/660 55 696
 Fax: +49(0)89/608 24 826
 partner@erc-hplc.de
 www.erc-hplc.de