

ELIMINATE CUMBERSOME DERIVATIZATION STEPS IN YOUR CARBOHYDRATE ANALYSIS

Application note # QAN-0071

PARAMETERS

NQAD

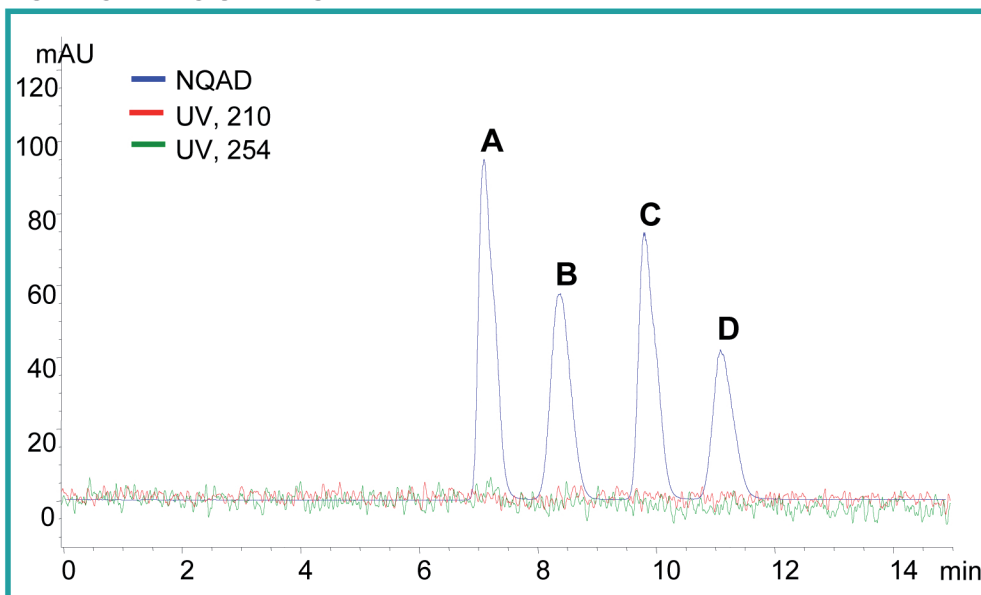
GAS: Air
 FILTER: 1.3 sec
 GAIN: 1X
 EVAPORATION TEMP: OFF

HPLC

MOBILE PHASE A: Water
 MOBILE PHASE B: ACN
 METHOD: 75-66% B in 13 minutes

FLOW RATE: 1.00 mL/min
 COLUMN: Prevail Carbohydrate Es 5u, 250 x 4.6 mm, Alltech
 COLUMN TEMP: Ambient
 INJECTION VOLUME : 10 µL
 ANALYTE: carbohydrate mixture
 CONCENTRATION: 500 ng each

CHROMATOGRAMS



(A) = fructose, (B) = glucose, (C) = lactose, (D) = sucrose



ERC GmbH
 Otto-Hahn-Strasse 28-30
 D-85521 Riemerling
 ☎ +49(0)89/660 55 696
 ☎ Fax: +49(0)89/608 24 826
 partner@erc-hplc.de
 www.erc-hplc.de