

Application note # QAN-0055

PARAMETERS

NQAD

GAS: Air
 FILTER: 5 sec sec
 GAIN: 100 ng @ 100X
 10 ng @ 500X
 EVAPORATION TEMP: OFF

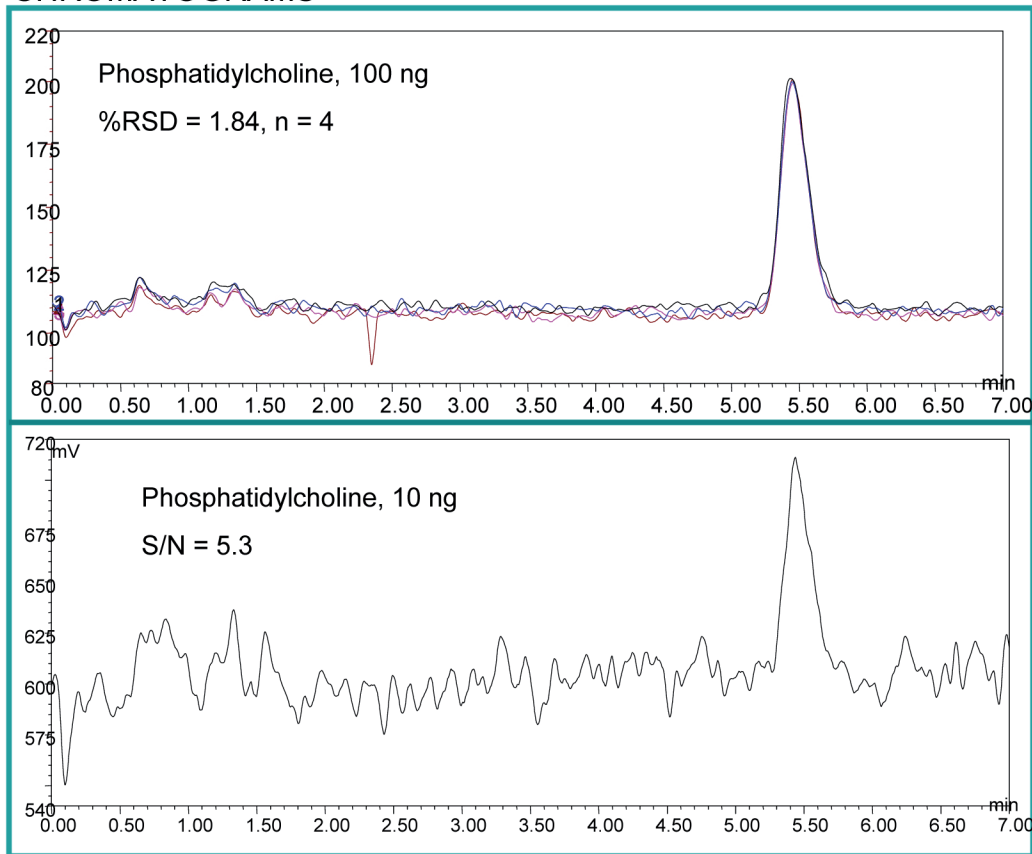
HPLC

MOBILE PHASE: MPA = MeOH, MPB =
 60:35:5 MeOH, Chloroform, water. 20:80
 MPA:MPB
 COLUMN: Alltech Prevail Silica, 3 μ , 150 x
 4.6 mm
 FLOW RATE: 1.5 mL/min
 COLUMN TEMP: Ambient
 INJECTION VOLUME : 1 μ L



ERC GmbH
 Otto-Hahn-Strasse 28-30
 D-85521 Riemerling
 ☎ +49(0)89/660 55 696
 ☎ Fax: +49(0)89/608 24 826
 partner@erc-hplc.de
 www.erc-hplc.de

CHROMATOGRAMS



Some analytes are challenging to both separate and detect reproducibly. One of these compounds is phosphatidylcholine, an analyte that contains both a polar and nonpolar end. The above chromatogram describes the ability of the NQAD detector to reproducibly detect this challenging compound while maintaining high sensitivity.