



THE NQAD OFFERS HIGH REPRODUCIBILITY, EVEN AT LOW CONCENTRATIONS

Application note # QAN-0050

PARAMETERS

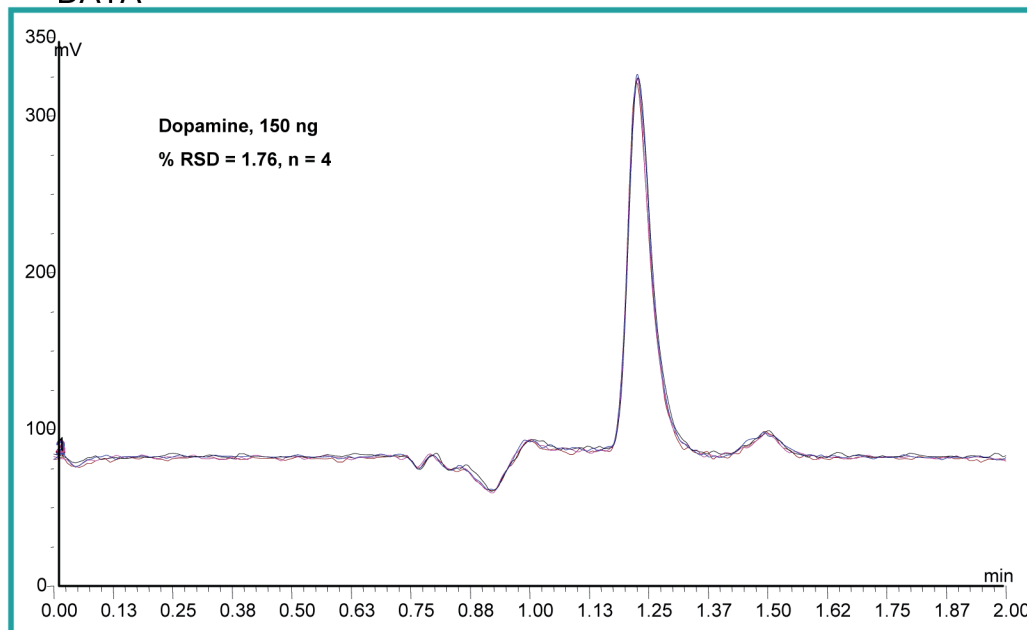
NQAD

GAS: Air
FILTER: 1.3 sec
GAIN: 50x
EVAPORATION TEMP: Off

HPLC

MOBILE PHASE: 15:85 MeOH: 1% TFA in Water
FLOW RATE: 0.5 mL/min
COLUMN: Phenomenex Synergi, 4u, 150 x 2.00 mm
INJECTION VOLUME : 10 μ L
CONCENTRATION: 150 ng dopamine

DATA



The NQAD technology is highly reproducible, even at low concentrations that are near the limit of detection for other detectors. Reproducibility is typically <2% for NQAD technology. The above chromatograms demonstrate excellent reproducibility for 4 injections of dopamine at a concentration of 150 ng on column.



ERC GmbH
Otto-Hahn-Strasse 28-30
D-85521 Riemerling
☎ +49(0)89/660 55 696
☎ Fax: +49(0)89/608 24 826
partner@erc-hplc.de
www.erc-hplc.de