

Application note # QAN-0028 revA

PARAMETERS

NQAD

GAS: Air
FILTER: 2.5 sec
GAIN: 10x
EVAPORATION TEMP: 35°C

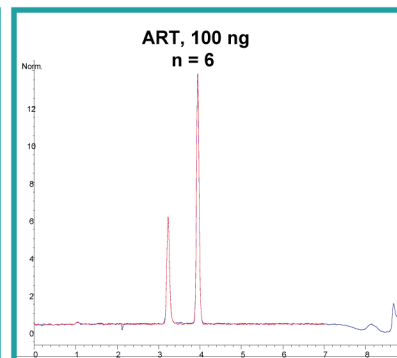
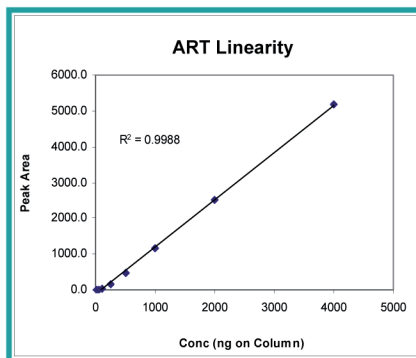
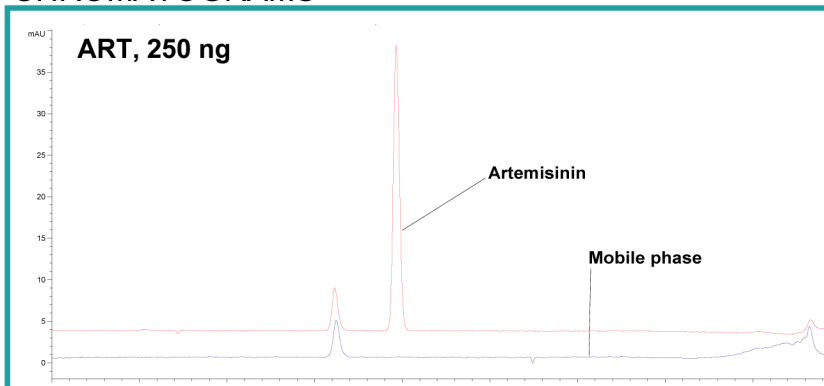
HPLC

MOBILE PHASE:

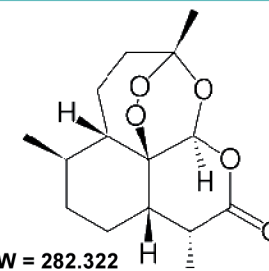
Time (min)	ACN (%)	Water (%)
0.0	70	30
5.0	70	30
6.0	100	0
6.1	70	30
9.0	70	30

FLOW RATE: 1.0 mL/min
COLUMN: Phenomenex Gemini C18,
5 μ , 150 x 4.6 mm
COLUMN TEMP: Ambient
INJECTION VOLUME :5 μ L
ANALYTE: Artemisinin

CHROMATOGRAMS



STRUCTURE



RESULTS

% RSD 500 ng = 1.5, n = 5
% RSD 100 ng = 3.0, n = 5
LINEARITY = 10-4000 ng
LINEAR REGRESSION = 0.9988
LOD = 10 ng



ERC GmbH
Otto-Hahn-Strasse 28-30
D-85521 Riemerling
☎ +49(0)89/660 55 696
☎ +49(0)89/608 24 826
partner@erc-hplc.de
www.erc-hplc.de