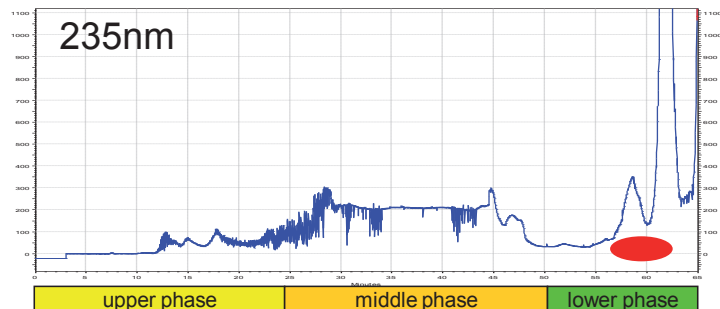
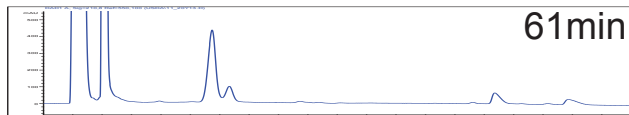
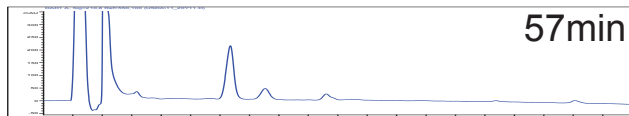
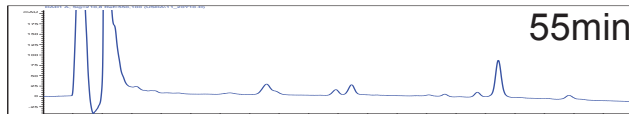
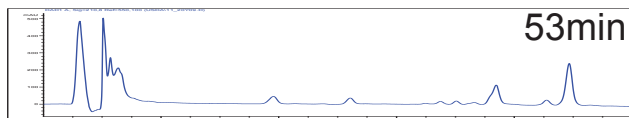
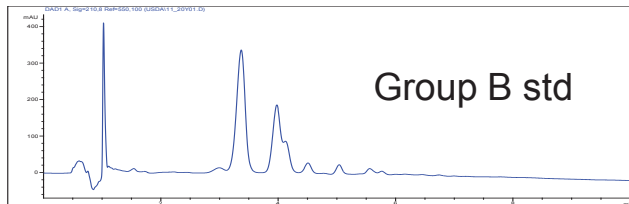


Saponin Separation – 3-Phase Solvent System

Hexane:MTBE:CH₃CN:0.1% aq. formic acid
(2:2:3:2); NP mode, elution as shown; 54mg analytical coil



HPCCC Conditions

Sample	Crude extract				
Concentration	54mg				
Solvent	UP/MP/LP 0.3/0.3/0.3				
Injection Volume	0.9				
Solvent System	hex:MTBE:ACCN:0.1%aq. FA (2:2:3:2)				
Solvent A	UP				
Solvent B	MP				
Solvent C	LP				
Solvent D					
Mixing Mode	premixed				
Pump	SSI				
Elution Flow Rate	1				
Extraction Flow Rate	2				
Flow Direction	P->C(NP)				
Method	3phase_FE				
Time	%A	%B	%C	%D	Flow
0	0	70	30	0	6
7	0	70	30	0	6
7.1	100	0	0	0	1
20	100	0	0	0	1
Method	3phase				
Time	%A	%B	%C	%D	Flow
0	100	0	0	0	1
25	100	0	0	0	1
25.1	0	100	0	0	1
50	0	100	0	0	1
50.1	0	0	100	0	2
65	0	0	100	0	2
Detection	235nm				
Coil Volume	25.5				
Instrument	SSI				
System Dead Volume	4				
Stationary Phase Displaced	12.5				
Sf	0.666667				
Bleed, Stripping?	F8to11 0.5				
	F11-14 1.7				
	F14to17 1				
	F17to20 1				
	F20to23 1				
	F23to26 0.8				
	F26to29 0.5				
	F29to end 0				
	total 6.5				
Sf at end	0.41				
Notes:					
Not bad. Run should have been slightly longer, 66min, but material collected.					
Fractions conc to dryness, dissolved in 0.5mL for HPLC (seq USDA07An.s)					



ERC GmbH
Otto-Hahn-Strasse 28-30
D-85521 Riemerling
☎ +49(0)89/660 55 696
☎ +49(0)89/608 24 826
partner@erc-hplc.de
www.erc-hplc.de